



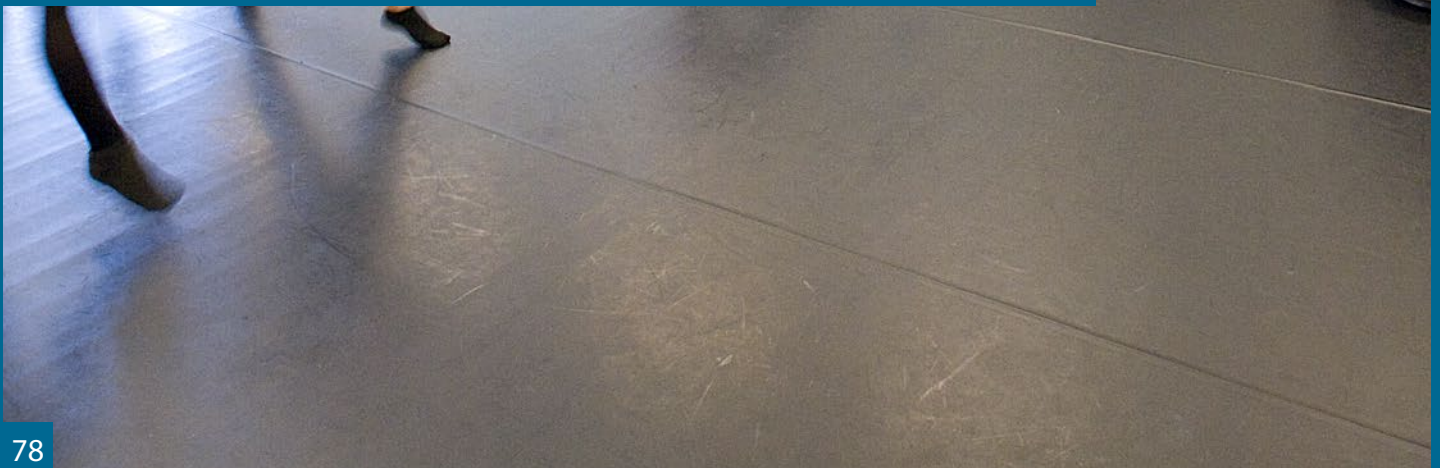
Rockfon® Impact™

FEATURES & BENEFITS:

- A reinforced glass scrim enhancing impact resistance
- Good sound absorption (NRC = 0.85)
- High fire performance
- High light reflectance (LR = 0.86)
- Available in square lay-in

APPLICATIONS:

- Corridors
- Classrooms
- Sports halls
- Multifunctional rooms





Edge designation	Item number	Modular size	lbs/sqft	sqft/carton	NRC	CAC	AC	Fire Class	Light Reflectance	Thermal Insulation	
										R Value (BTU Units)	RSI Value (Watts Units)
	SQ 4100	2' x 2' x 3/4"	0.45	80	0.85	22	-	A	0.86	2.6	0.46
	SQ 4200	2' x 2' x 1-1/2"	0.78	40	0.85	22	-	A	0.86	5.3	0.92

MATERIAL:

Stone wool (Mineral Wool) ceiling tiles.

SURFACE FINISH:

Factory painted reinforced glass scrim to increase impact resistance.

FIRE PERFORMANCE:

Surface burning characteristics: UL723 (ASTM E84). Flame Spread Index 0, Smoke developed Index 5. CAN/ULC S102 Flame Spread Index 5, Smoke developed Index 0.

ASTM E1264 CLASSIFICATION:

Type XX - Stone wool base with membrane-faced overlay, Pattern E

SAG RESISTANCE:

ROCKFON ceiling tiles are dimensionally stable even at high humidity levels of up to 100% relative humidity and can be installed at all temperatures ranging from 32 °F to 104 °F. No acclimatization is needed. ROCKFON ceiling tiles can be installed during the very early stage of the build (when windows are not fully sealed) without any risk of deflection of the tiles. The low weight, stability and non-hygroscopic character of ROCKFON tiles will

limit the weight of the fully installed ceiling whilst retaining its declared properties even when applied in infrequently heated and unheated rooms without condensation.

VOC/FORMALDEHYDE EMISSIONS:

The product fulfils requirements for low emitting acoustic ceiling tiles and meets the California Department of Health Services Standard Method V1.1 (February 2012) "Standard method for the Testing and Evaluation of Volatile Organic Chemical Emissions from Indoor Sources Using Environmental Chambers (Section 01350)" Selected potential applications: LEED, CHPS and CALGreen.

HYGIENIC PROPERTIES:

ROCKFON ceiling tiles are made of water repellent stone wool. Stone wool has no nutritional value and therefore it provides no sustenance to harmful micro-organisms.

CLEANING PROPERTIES:

The surface can be vacuum cleaned with a soft brush attachment. It can also be cleaned using a damp cloth with cold or warm water (max. 104 °F) with a slightly alkaline detergent (pH between 7 and 9)

without alcohol, ammonia or chlorine. Cleaning with a sponge or damp cloth may render the surface slightly shinier and we therefore recommend cleaning the whole surface evenly for best results.

IMPACT RESISTANCE:

Rockfon Impact's capability to withstand incidental or occasional ball impact has been tested. For more details, please contact ROCKFON.

WARRANTY INFORMATION:

10-Year Limited Product Warranty. See www.rockfon.com

SUSTAINABILITY:

ROCKFON stone wool ceiling tiles are primarily made from abundantly available basalt rock and contain up to 42% recycled materials. ROCKFON products supplied in North America are produced in ISO9001/ISO14001 certified factories.